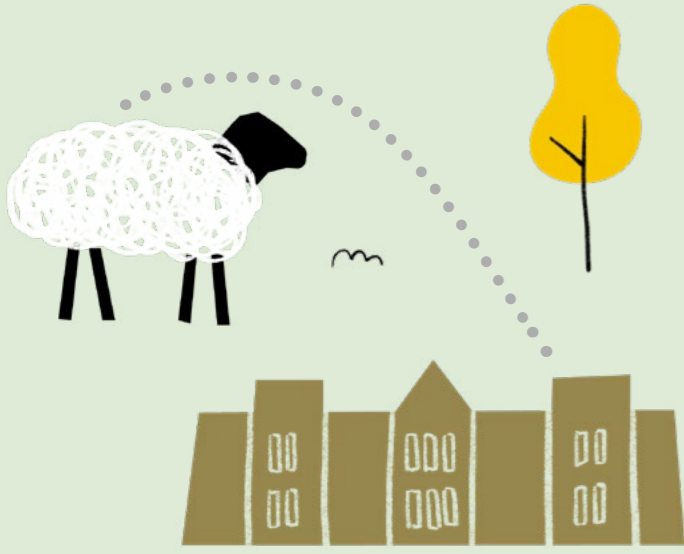


# EXPLORING YORK





Exploring York and all that it has to offer has never been so easy.

We've routes for all ages and abilities, ready and waiting for you to explore.

Whilst you're out and about, remember let's be respectful and patient of others. Let's keep as safe as possible by following social distancing measures.

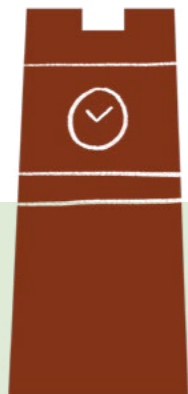
## Fulford to Germany Beck and Heslington Tillmire

 Distance **6.5 miles**  
 Est. Time **2:30hrs**

If you're planning to travel to, from and through York we want to make sure you have access to travel information that will help keep you safe and be able to plan your journey.

You can explore information about active travel and its benefits by downloading our Cycle route maps, Walking Guides and information on our popular Urban Cycle Skills Sessions at [www.itravelyork.info](http://www.itravelyork.info)

For further information on how to explore York safely go to [www.visitryork.org](http://www.visitryork.org)



### The Lake District

Germany Beck is prone to flooding. To protect new homes, an area designed to flood has been created which includes a series of lakes. These lakes have quickly become a haven for wildlife and are a great place to see dragonflies. An artificial island has also been created to provide a safe haven for water voles which live beside the beck.



### The Battle of Fulford

The land around Germany Beck is believed to be the site of an important historical battle, when in 1066 the English king Harold Godwinson lost a battle against invading Nordic forces led by King Harald Hardrada of Norway, and the rebellious Earl Tostig, King Harold's exiled brother. King Harold beat the invading forces five days later at Stamford Bridge but was then killed at The Battle of Hastings a few weeks later. Axes, arrows and swords have been found here.

### Did you spot any birdlife on your walk?

- Blackbird
- Blue tit
- Bullfinch
- Chaffinch
- Chiffchaff
- Goldfinch
- Great tit
- Great-spotted woodpecker
- Greenfinch
- House martin
- Robin
- Swallow
- Swift
- Whitethroat
- Willow warbler
- Vulture!?
- .....



### The ancient game of golf

Fulford Golf Course opened in 1935, but the game of golf is much older. The modern version of golf began in 15th century Scotland but was banned by King James II because he considered it a distraction to people learning archery. In 1764 the first 18 hole golf course was opened at St Andrews in Scotland.



### The University of York

The University of York opened in 1963 with only 230 students. Nowadays more than 18,000 students study here. The grounds hold some lovely flowerbeds as well as scenic lakes and a wide variety of wildlife. Archaeological excavations in the grounds have found many relics from the Bronze Age, Iron Age and Roman times including a preserved human brain!



### What kind of flowers can you see?

- Dandelion
- Daisy
- Clover
- Bluebell
- Daffodil
- Rose
- Orchid
- .....

### Topiary

As you walk through Heslington Golf Course you will notice that many bushes have been pruned to globe-like shapes. The deliberate shaping of trees and bushes is known as topiary and has been practiced since Roman times. The craft is now popular worldwide and bushes have been clipped and shaped to create mazes, birds and even elephants.



### Heslington Tillmire

Heslington Tillmire is a nationally important marshy grassland home to a variety of wetland birds including lapwing, snipe, redshank and curlew. Barn Owls, kestrels and buzzards can be seen hunting in the area. Grazing by rare breeds of sheep helps to keep the site in good condition for wildlife.

# Fulford to Germany Beck and Heslington Tilmire

## 1 Start

Buses 7, 25 and 26 run from the city centre frequently to Main Street, Fulford. Alight at the Bay Horse and then walk south heading away from the city centre.

## 2

Turn left upon reaching Fordlands Road and then almost immediately turn left again into Germany Lane. Follow the lane as it passes the Germany Beck housing development on the left.

## 3

Continue walking almost straight ahead. The road becomes a track with the Germany Beck housing development still on the left.

## 4

The track runs parallel to the Germany Beck stream on the right. At a junction continue walking straight ahead.

A new nature area includes several lakes which benefit wildlife and helps to prevent flooding of the nearby housing development.

## 5

The footpath turns to the left at this point heading northwards towards the University of York.

## 6

The track becomes Michel's Lane at this point. Continue walking straight ahead.

## 7

Upon reaching Heslington Lane cross the road, turn right and continue walking along an off-road footpath.

## 8

Continue walking along the off-road footpath as it runs parallel to Heslington Lane.

## 9

After passing Fulford Golf Club cross the road and look for a public footpath just to the left of the golf club car park. Follow this footpath.

The public footpath runs along the edge of the golf course car park. Walk straight ahead. The footpath follows the road running through the golf club grounds.

## 10

Continue to follow the road which runs along eastern edge of the golf course.

## 11

The footpath leads to a bridge which crosses the outer ring road.

## 12

After crossing the bridge walk straight ahead for a short distance. Turn right at an entrance leading into the golf club grounds. Then almost immediately turn right again to walk through a small copse.

## 13

The path turns sharply to the left and then continues along the edge of the golf course.

Look out for flocks of sheep with their lambs on Heslington Tilmire.



## 14

After passing through Heslington Tilmire look for a public footpath sign on the right. Turn right to use a small wooden bridge to cross a ditch.

## 15

After passing through two fields the footpath turns to the right heading towards Tilmire Farm.

## 16

Upon reaching Tilmire Farm turn left and walk along the track for a short distance until reaching Forest Lane.

## 17

At a junction of tracks turn right into Forest Lane and follow this track.

## 18

A bridge along Forest Lane passes over the Outer Ring Road. Then Forest Lane turns to the left and leads into Fulford.

## 19

Upon reaching a junction turn right and walk along Cross Lane a track running along the southern edge of Fulford.

## 20

The track eventually turns to the left. Continue following the track and walk straight ahead.

## 21

Turn left at a junction and then retrace the route to bus stops along Main Street, Fulford.



**Accessibility**  
The route is accessible. Note that a wooden bridge at the end of Heslington Tilmire might not be wide enough for a heavy duty wheelchair.

**Buses**  
Take bus 7, 25 or 26 to The Bay Horse, Main Street, Fulford. To return to York city centre take one of these buses from the Pasture Farm Close bus stop on the opposite side of Main Street.

**Dogs**  
Please keep dogs on a lead. This walk passes through a sensitive nature conservation site.